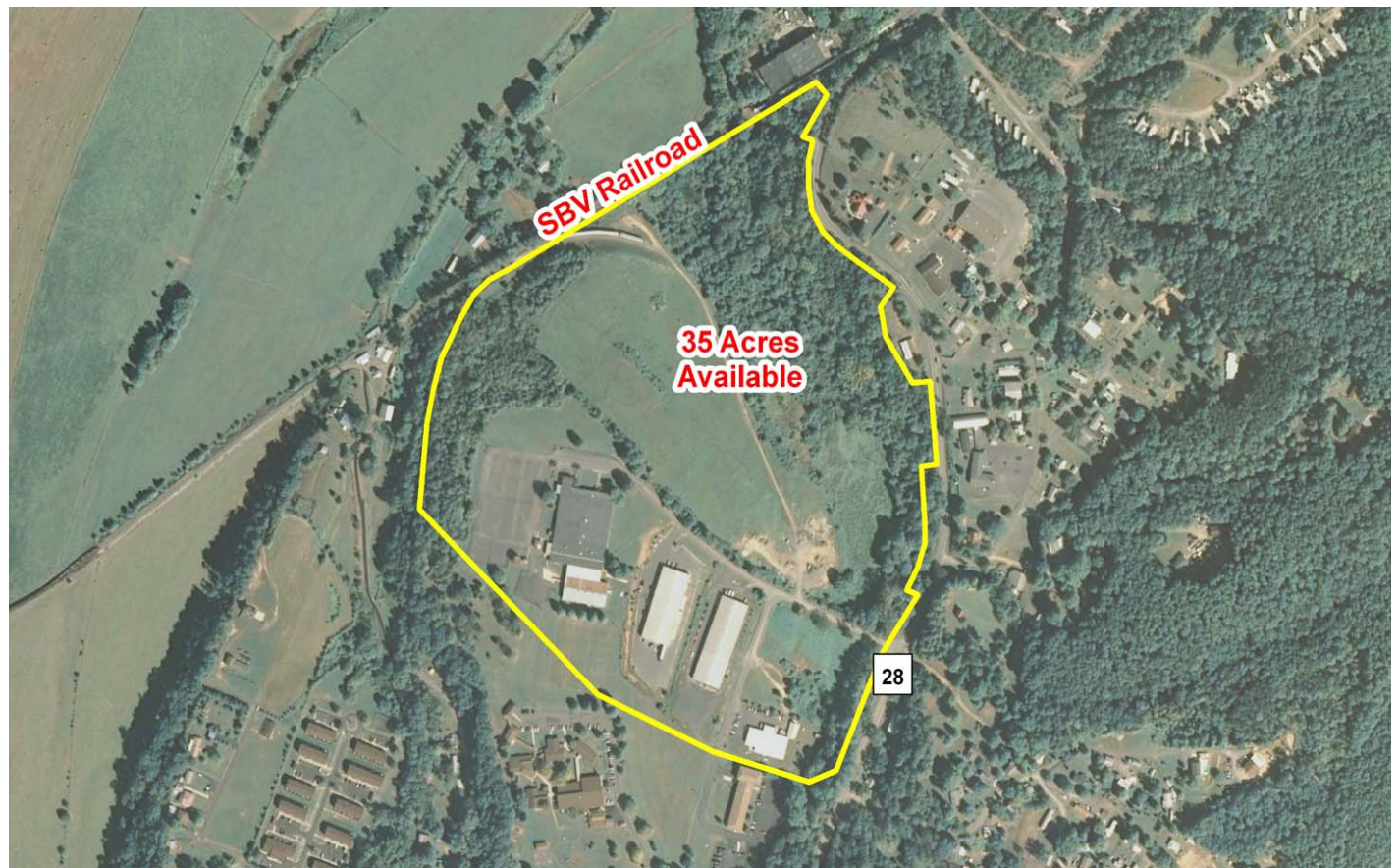


AVAILABLE PROPERTY HAMPSHIRE COUNTY / ROMNEY BUSINESS PARK



ROMNEY, WEST VIRGINIA

LOCATION

Located in City Limits - Yes

County - Hampshire

SIZE

Total Acreage - 57.943

Available Acreage - 35.003

Maximum Contiguous Acres - 35.003

TRANSPORTATION

Interstate/4 Lane Highway - 28 miles to I-68 Interchange

Commercial Airport - 24 miles to Greater Cumberland Regional Airport

Railroad - South Branch Valley

Railroad Siding - Yes

Navigable River - None

On-Site Barge Facility - None

UTILITIES

Electricity - Allegheny Power

Voltage - 12 kV

Phase - 3

Gas - None

Size of Gas Main -

Gas Pressure -

Water - City of Romney

Size of Water Main - 8"

Water Pressure (static) -

Water Pressure (residual) -

Excess Capacity of Treatment Plant -

Sewer - City of Romney

Size of Sewer Main - 8"

Excess Capacity of Treatment Plant -

Telephone - Frontier Communications

Switching -

Broadband Service -

SALE/LEASE

Sale Price - Negotiable

Sale Terms - Negotiable

Lease Price - No plans to lease but possible

Lease Terms - No plans to lease but possible

Available Purchase Date - Immediately

FOR FURTHER INFORMATION CONTACT

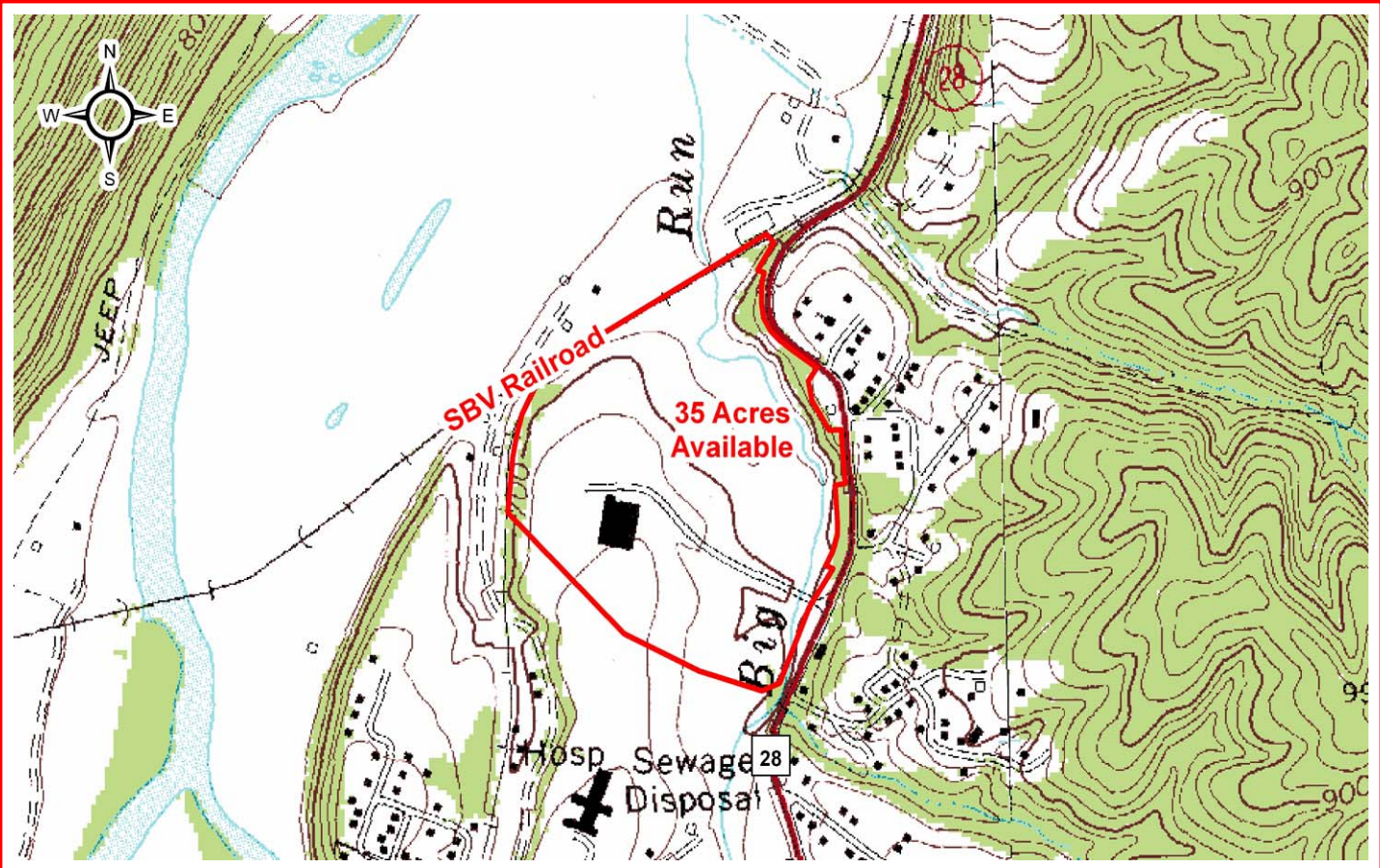
West Virginia Development Office

1900 Kanawha Blvd., E.

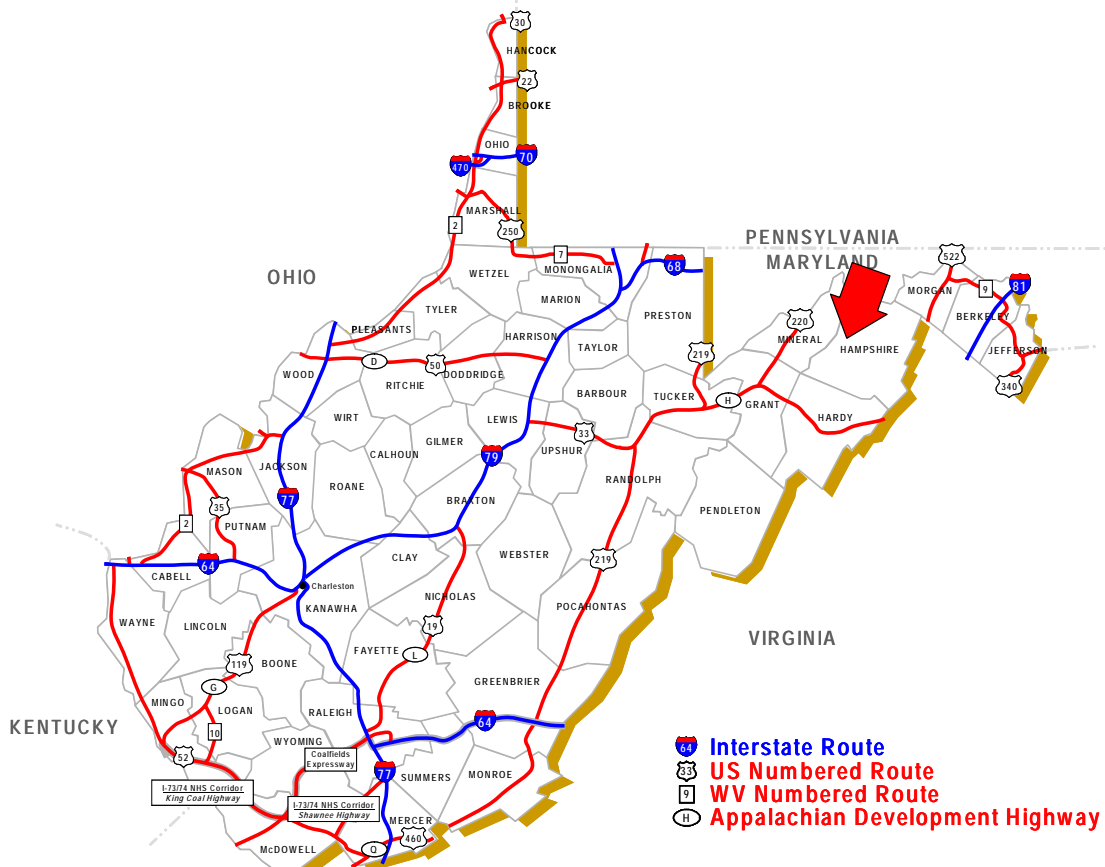
Charleston, WV 25305-0311

Toll Free: (800) 982-3386

Office: (304) 558-2234



SCALE: 1" = 1000'



ROMNEY, WEST VIRGINIA